



**TAIPEI
EUROPEAN
SCHOOL**

台 北 歐 洲 學 校

Learn and Flourish

PROSPECTUS

2022-2023



CONTENT

INTRODUCTION	2
OUR CAMPUS	5
GERMAN SECTION	8
FRENCH SECTION	12
BRITISH PRIMARY SECTION	22
THE BRITISH SECONDARY AND HIGH SCHOOL SECTION	25
STUDENT SERVICES	29
ADMISSIONS	32
VISION, MISSION AND CORE VALUES	33

Child Protection and Safeguarding - Keeping our students safe is our number one priority.



INTRODUCTION

Learn and Flourish

At TES our vision is to encourage the community – students, teachers, parents – to engage in lifelong learning and to work together to support wellbeing – physical, social, emotional and mental. Feeling good and doing well via holistic programmes offered in and after school, ensure that we all function at our best, 'Flourish'.

We try to help our students develop attributes that will serve them well after they graduate - to be:

A life-long learner, A critical thinker, Independent, Empathetic, Socially responsible, Interculturally aware, Globally minded.

Additionally the school's community values: Respect, Participation, Responsibility, Creativity and Perseverance - set the children on a path to 'do well by doing good' where they can make a positive difference in the world around them.

TES Development

TES was founded in the 1990s through the amalgamation of the German, French and British schools. The vision was to create One School from three schools in order to get synergy and strength from each other. It has since grown to a school of over 1700 students and provides high-quality, accredited education to the international community in Taiwan, Republic of China.



Our Curricula

Unlike other international schools, our German, British and French Sections offer their three respective European national curricula for students from ages three upwards. Our High School Section allows students from all Sections to undertake the International General Certificate of Secondary Education (IGCSE) or French and German qualifications on an equal level with IGCSE in the first two years; and the final two years of High School culminate in the prestigious International Baccalaureate (IB) Diploma. We also offer dedicated language and special needs support programmes for students where appropriate and possible.



Our Students

We are hugely proud of the fact that our graduates are consistently offered places at universities that are among the best across the world. However, the growth and development of our students goes beyond their academic excellence. At TES, we develop the 'whole child'. Our students are offered the opportunity to be educated and immersed in both Western and Eastern cultures and knowledge, and to develop the qualities of cultural understanding, compassion, empathy and tolerance through their daily life at school. Further, we encourage students to develop in a much broader sense through the many cultural, community, artistic, sporting and charity activities that feature prominently in our co-curricular calendar.

TES Accreditations

TES continues to receive very positive and encouraging reports from inspection agencies from Germany, Britain and France and we have been granted full accreditation from two of the world's leading accreditation bodies: the Council of International Schools (CIS) based in Europe and the Western Association of Schools and Colleges (WASC) based in the USA. This joint accreditation provides further evidence of our commitment to excellence.





A Not for Profit Organisation

TES is a not for profit organisation; all funds generated by the school are reinvested into supporting the school's further development of teaching and learning. Through the support and commitment of our Board of Directors as well as from our various parent support groups across our school, we have gone from strength to strength. Local and international companies and individuals have also played a major part through donations to our capital development projects.

Welcome to our school and we trust that you will enjoy learning more about the exciting and rewarding opportunities that exist for our students, parents, staff members, alumni and friends.

OUR CAMPUS



Taipei European School is proud to offer world-class learning facilities across two sites. Our campuses comprise purpose-built modern buildings for Infant, Junior, Secondary and High School students. In addition to fully-equipped classrooms, our campuses offer innovative spaces for study, sports and recreation.

Our Primary campus is conveniently located in the ShiLin district of Taipei, in an area popular with expatriate families. ZhiShan station is a five minute walk from the campus and provides access to surrounding areas via the Taipei Metro system. The city centre is only about 15 minutes away by car, bus or train.

Our Secondary campus is beautifully situated in the hills surrounding Taipei. With close proximity to Yang Ming Shan National Park and the Chinese Cultural University, the school is able to use its location to broaden the curriculum and offer a diverse range of opportunities to students. The campus is easily accessed by public transport and is only a 25 minute drive from the Primary campus.

Swire European Primary Campus (EPC)

Our Primary Campus is home to the Central Resource Area (CRA), the Infant Building and the Junior Building, accommodating around 1,000 students.

The Central Resource Area houses common facilities, such as the cafeteria, library, staff room, offices, gym, uniform shop and underground car park. It is connected to both the Infant and Junior buildings.

The two-storey Infant building contains classrooms for the British Infant classes, the French Maternelle and the German Kindergarten. The Infant building also features a multi-purpose room/gym, outdoor playgrounds with play structures, grassed and astroturfed areas, a cookery room, ICT suites and a music room. A covered rooftop playground provides extra recreation opportunities in any weather.

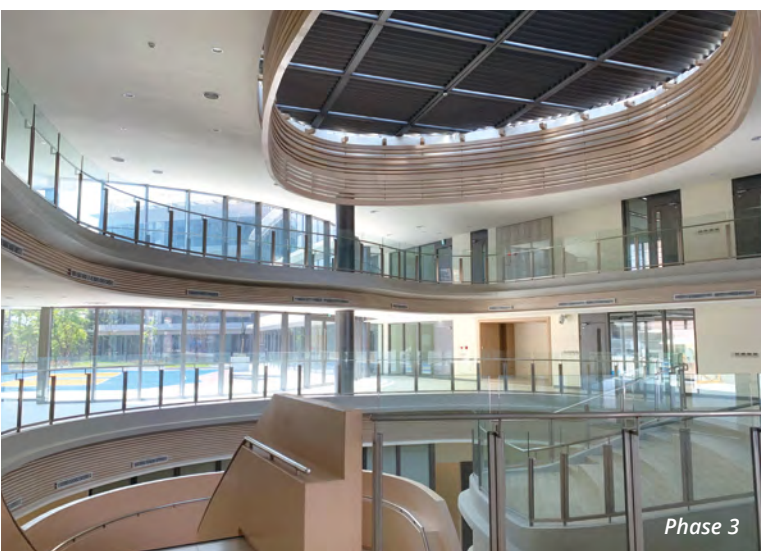
The five-storey Junior building houses the British Junior classes, as well as the French and German primary school classes. The building features fully equipped specialist teaching rooms for Cookery, Art, Science, STEAM, Music and ICT. It is also home to the Primary School's Amphitheatre, where assemblies and performances are held. Outside there are two play areas with play structures and two astro turf sports fields.





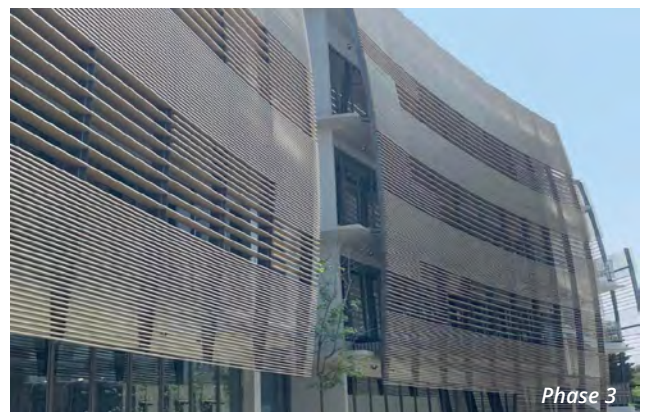
Swire European Secondary Campus (ESC)

The three buildings on the Secondary Campus are referred to as Phase 1, Phase 2 and the newly opened Phase 3. These buildings house students in our German, French and British Secondary Section and students in the High School, accommodating around 700 students.



Phase 3

Phase 3, which opened in May 2020, offers 30 large classrooms, 2 gymnasiums, a fitness room and a dance studio. This state of the art building provides wonderful learning spaces which enable students to reach their potential in any class. The stunning facade gives the building a modern but classic look, with the design based upon the concepts of a Chinese-style bookcase.





Phase 2

Phase 2

Phase 2 offers a large number of general classrooms and purpose-designed learning spaces including Science laboratories, Visual Art spaces, a gymnasium, the library, and the Writers' Hub. Phase 2 is also the home for many of our student services, including the IT Help Desk, The Counselling Centre, The ASPIRE Department and the High School Cafeteria. In addition, the central atrium is used for assemblies and drama productions.



Phase 1

Phase 1

Phase 1 was completed in 1998 and was renovated in 2011. Phase 1 consists of general classrooms as well as fully-equipped Science laboratories and ICT suites, a Robotics Arena, maker spaces and two Drama studios. The recently renovated Music floor comprises a Recital Space, Music classrooms, rehearsal rooms and a Music technology suite. It also houses the Secondary students' cafeteria, the nurse's station and an open atrium area for small assemblies and performances.

All classrooms across the site have the latest interactive whiteboards, offering access to and integration of information technology in the learning process. In addition, the school operates a 1:1 device programme.

In addition to the main site, the TES Sports Centre facility opened in 2017, houses the football field, tennis courts, changing rooms and a clubhouse. Located just a few minutes from the school, shuttle buses are utilised to transport students to and from the sports centre.



Ten reasons for registering your child in the German Section:

1. German Curriculum

The German Section of the Taipei European School is sponsored by the federal government and recognised by all the states of Germany as part of the German overseas schools international network, thereby allowing students to graduate with a Middle School Diploma according to German curricula.

2. Solid Foundation in the German Language

In kindergarten and primary school, our students' language skills are reinforced and their vocabulary broadened. Students with other mother tongues acquire a high level of German language skills, largely through play.

3. Differentiated Teaching of English as a First Foreign Language

English is taught from first grade at various levels, thereby allowing beginners, as well as more advanced students, to flourish.

4. Bilingual Education in German and English

In grades 5 to 8, some classes are taught bilingually. The subjects Art, Music and P.E./Sport are taught by English native speakers.

5. Middle School Certificate Issued in Accordance with British and German Standards

In grades 9 and 10, classes are mostly bilingual and students gain the German Middle School Leaving Certificate issued by the 'Kultusministerkonferenz', as well as International General Certificates of Secondary Education (IGCSEs) issued by the examinations board of Cambridge University.





6. University Admittance in Germany and Worldwide

In grades 11 and 12, students embark on the two year mixed language International Baccalaureate Diploma (GIB), offered in co-operation with the British High School Section. German is offered as mother tongue in the Language A section. The GIB Diploma course equips students with academic English and German at the highest levels and allows easy access to courses taught in English or German at universities around the globe.

7. Exposure to the Culture and Language of the Host Country

All students from pre-school to grades 5 are exposed to the culture of the host country and are taught Chinese (Mandarin) reading and writing at different levels. In grade 6, students can choose between Mandarin or French as a second foreign language.

8. German School Education in a European Context

Students are given a German school education in a European school in which they have daily contact with peers from other cultures and they acquire the ability to move from one language to the other with natural ease.

9. Highly Professional Teaching Team

The teachers and educators in the German Section are a highly professional team. They strive to teach students self organisation and independent learning skills. The school was awarded the quality seal 'Excellent German School' abroad by the President of the Federal Republic.

10. Engaged Parents

Parents have the opportunity to play a role in school life at various levels and maintain close communication with the Head and the teachers.





Deutsche Schule Taipei

Zehn Gründe, weshalb Ihr Kind die Deutsche Sektion besuchen sollte:

1. Deutsche Lehrpläne

Die Deutsche Sektion der Taipei European School ist eine vom Bund geförderte und von den Ländern der Bundesrepublik Deutschland anerkannte deutsche Auslandsschule im Netzwerk Deutsche Auslandsschulen International. Sie arbeitet bis zum Mittleren Bildungsabschluss nach deutschen Lehrplänen.

2. Solides Fundament in der deutschen Sprache

Im Kindergarten und in der Grundschule wird die deutsche Sprache gefestigt und es wird ein umfangreicher Wortschatz aufgebaut. Auch Kinder anderer Muttersprachen erlernen im Kindergarten spielerisch Deutsch auf sehr hohem Sprachniveau.

3. Differenzierter Englischunterricht als erste Fremdsprache

Der Englischunterricht beginnt ab Klasse 1 und wird auf mehreren Niveaustufen angeboten, so dass der Sprachanfänger genauso gefördert wird, wie derjenige, der mit der Sprache schon sehr viel Berührung hatte.

4. Bilingualer Ausbildungsgang Deutsch und Englisch

In den Klassen 5 bis 8 findet der Unterricht bilingual statt. Die Fächer Kunst, Musik und Sport werden von Muttersprachlern auf Englisch unterrichtet.

5. Mittlerer Bildungsabschluss nach deutschen und britischen Standards

In den Klassen 9 und 10 findet ein fast vollständig bilingualer Unterricht statt und die Schüler erwerben sowohl den deutschen mittleren Schulabschluss der Kultusministerkonferenz als auch das britische International General Certificate of Secondary Education (IGCSE) der Universität Cambridge.



6. Allgemeine Hochschulzugangsberechtigung in Deutschland und weltweit

In den Klassen 11 und 12 durchlaufen die Schüler den zweijährigen Kurs zum gemischtsprachigen International Baccalaureate Diploma (GIB) in Zusammenarbeit mit der High School Section mit Deutsch auf Muttersprachniveau im Themenfeld A. Geschichte und Biologie werden ebenfalls auf Deutsch unterrichtet.

Das GIB Diplomaprogramm vermittelt deutsche und englische Sprachkompetenz auf höchstem Niveau und eröffnet den Zugang zu sowohl deutschen als auch englischsprachigen Studiengängen weltweit.

7. Begegnung mit der Kultur und Sprache des Gastlandes

Alle Schüler der Vorschule bis Klasse 5 lernen die Kultur des Gastlandes kennen und können die chinesische Sprache (Mandarin) in Wort und Schrift auf verschiedenen Niveaustufen erlernen oder weiter entwickeln. Ab Klasse 6 kann zwischen Französisch oder Mandarin als zweite Fremdsprache gewählt werden.



8. Deutsche Schulausbildung in europäischer Einbindung

In der Deutschen Sektion erhalten die Kinder und Jugendlichen eine deutsche Schulausbildung eingebettet in eine europäische Schule, in der sie täglich Begegnungen und Kontakte mit Schulkameraden aus anderen Kulturen haben und spielerisch zwischen den Sprachen wechseln.

9. Hochprofessionelles Mitarbeiterteam

Das Lehrer- und Erziehererteam der Deutschen Sektion arbeitet hochprofessionell nach internationalen Standards und leitet die Schüler zu selbstorganisierten und individualisierten Lernprozessen an. Die Schule wurde vom Bundespräsidenten als „Exzellente Deutsche Auslandsschule“ ausgezeichnet.

10. Engagierte Elternschaft

Die Eltern wirken auf zahlreichen Ebenen an der Gestaltung des Schullebens mit und führen einen sehr engen Dialog mit der Schulleitung und den Lehrkräften.



FRENCH SECTION

Found in the heart of Taipei European School, the French Section is the school of choice for almost 400 students from the Petite Section (3 years old) to the Terminale (18 years old). The section offers a curriculum accredited by the French National Ministry of Education within a unique international school experience delivering multilingual education and is a part of the French international schools' network.

The French Section draws on a unique approach to learning, particularly for language acquisition, allowing children to learn and become fluent speakers of French and English while giving them access to classes with differentiated levels of Chinese. In secondary school, students can acquire a fourth and sometimes a fifth language. This challenging and enriching multilingual curriculum supports the development of our students' intercultural skills. However, the experience goes beyond the linguistic talents of our students; they also excel in science, technology, humanities, mathematics, visual arts, PE, and much more. Additionally, the French Section offers an average ratio of one adult for every nine students, a qualified and experienced teaching team, and the integrated use of IT in all subjects.

The French Section's bilingual primary program and structure empowers students to build a solid foundation of knowledge and skills that will be meaningful and transferable in their future. The faculty is dedicated to differentiated learning - nurturing each child and looking at each student's learning profile and needs. In secondary school, our students take the French national exams (Brevet and Baccalauréat), the Cambridge International General Certificate of Secondary Education (IGCSE), and the international baccalaureate (IB), giving graduates access to the finest French, British, European, and North American post-secondary institutions.

The French Section is welcoming, diverse, internationally-minded, and offers a challenging and innovative curriculum. French Section families are closely involved with their children's education and achievements. The section fosters a home and school partnership and uses diverse ways of communication to keep parents updated on their children's progress. The TES French Section is a unique school with a unique outlook, a place you will be happy to call home.

If you aspire to provide your child with the means to master several languages, develop their unique talents, excel academically, think critically, express themselves through the arts, gain confidence and independence, and one day attend one of the world's top universities, then you've found us: the French Section at the heart of Taipei European School!

French Section : Primary

Infant School (*Maternelle*)

Maternelle spans three years - Petite Section (PS), Moyenne Section (MS) and Grande Section (GS). During their time in Maternelle children learn the fundamentals of teaching and learning - skills which they will build on and develop during their entire school life. The main goals are to instill a love of learning and to help each child discover and develop their own character. Its governing principle is that all children can learn and progress. The Maternelle staff are confident in each child's ability, and help each child develop self-confidence in their capacity to engage, think, learn and succeed in school and beyond.

Elementary School (*Élémentaire*)

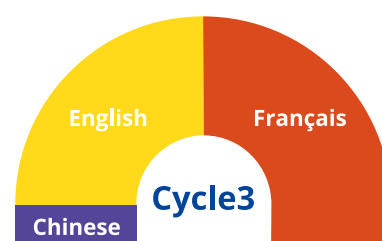
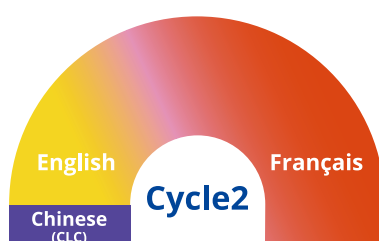
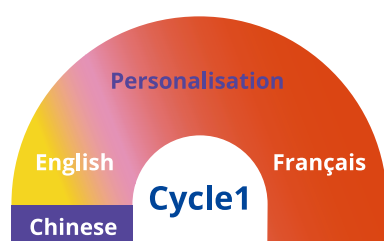
Elementary school consists of five class levels for students aged between 6 and 11 years old: CP, CE1, CE2, CM1 and CM2. The primary school curriculum emphasises language learning, in particular developing a good command of oral languages. Throughout elementary school, children learn languages, math, art, sport and physical education, and engage in activities that question the world around them. In CM1 and CM2, they focus more intently on literature, math, history, geography, science and IT. They also learn to think, reflect and observe, while experimenting, imagining and developing their creative skills.

Curriculum

Our Section follows the French National Curriculum for Primary School. It is delivered by our teachers in their native language depending on the class schedule and following our bilingual pathway.

Our bilingual French-English pathway

The French Section students are engaged in a bilingual programme with learning experiences in French, English and Chinese. They are bilingual in French and English by the end of primary school. In Maternelle, we put a strong emphasis on the French language, but with plenty of opportunities for the children to learn and interact in English and also Chinese. Then, as they move through elementary, the exposure to English progressively increases, with some parts of the curriculum in Maths, Science, Geography, etc being taught in English. Typically students have 2 classroom teachers (a French teacher and an English teacher) who alternate the teaching of the class on a daily basis.





Language support programmes

Some of our students need an extra helping-hand to help facilitate their language acquisition to a level that will aid their overall development in the classroom. Most of the time, this is because they are newly arrived at our school. The French Additional Language (FAL) and English Additional Language (EAL) programmes are meant to provide students with intensive support in small groups for one to two hours each day. FAL and EAL teachers support students until they become comfortable with the language, first to communicate with others, and second to give them access and be able to learn from the curriculum. Students participate in the FAL or EAL programmes usually for 1 or 2 semesters, but this can be extended when necessary. EAL and FAL teachers work closely with the French and English classroom teachers to plan lessons and assess children's language development progress during this period.

Chinese Language and Culture (CLC) Classes

Mandarin language instruction is conducted according to the TES curriculum for CLC. Instruction and groupings are differentiated according to students' language profiles, and learners have the possibility to change group level during the course of the year depending on their progress. Students from French, British and German Sections learn Chinese together in ability-level groups starting from GS. The three groups are Chinese as a Foreign Language (CFL), Chinese Language (CL) and Chinese Language and Literature (CLL).

In the French Section Maternelle, at PS and MS levels, a full-time Chinese teacher provides students with opportunities to learn and interact in Chinese. This is particularly important for students who have Chinese as a first language as this helps them to maintain their fluency in that language and provides them with social and emotional security. It is also a great opportunity for students who don't speak Chinese yet as they have a chance to become curious about this language and are often very eager to learn it!

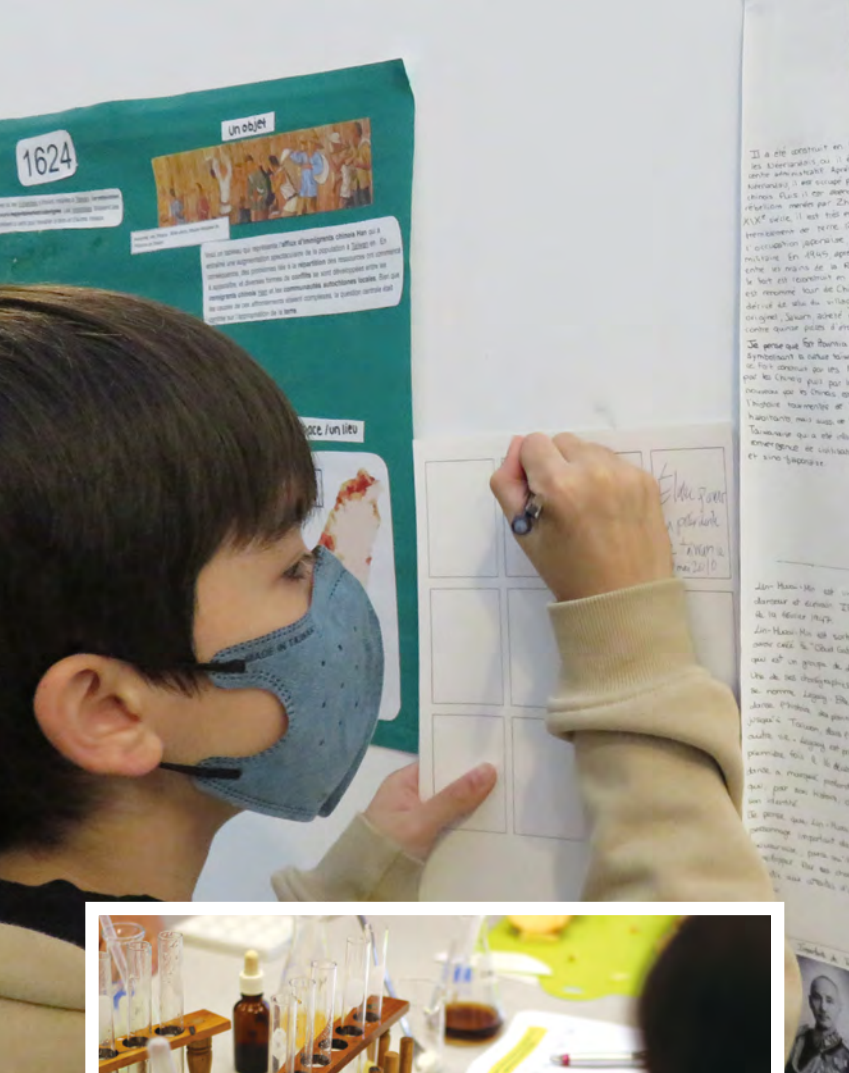
French Section : Secondary

Middle School (Collège)

Middle school welcomes children after elementary school. During 6ème, students reinforce and complete the fundamental learning acquired in primary school. At the same time, they discover new subjects and new methods of teaching and learning.

Secondary students study French, English, Chinese, mathematics, a third foreign language (Spanish or German), history & geography, science, technology, art and music. They also have civics & citizenship and sport classes. Latin is also available as an elective.

Sport and physical education, music, art, English and Chinese language and culture are taught by native English (and Chinese for CLC) teachers as a part of the TES combined classes programme in conjunction with the British and German Sections.



Teaching and learning in the French Section middle school is in accordance with French Ministry of Education curriculum. At the end of middle school (3ème), Collège students take the French National Brevet exams. French Section students get excellent results at the Brevet exams: 100% pass rate and 100% highest and very high honours.

High School (Lycée)

Students in 2nde, under the guidance of their teachers, will decide which subjects and specialties suit them best for their final high school two years. The decision is made according to the students' plans, their interests, and their academic results.

At the end of 2nde, students enter the two last years of high school: Première and Terminale. The French Section offers the following specialties: maths, physics, biology, geopolitics, economics, and Humanity Literature and Philosophy.

French Section students since 2017 have gotten excellent results in the Baccalauréat: 100% pass rate and 100% honours.

Languages in Secondary

From 6ème to 4ème

The bilingual French-English programme taught in Primary school well prepares French Section students for Secondary Courses.

From 6ème to 4ème, all TES students have English, Chinese, art, music, and physical education classes in Combined Courses. The language of instruction for the Combined Courses is English (excluding Chinese Language & Culture classes).

French Section students from 6ème to 4ème study French literature, mathematics, physics, biology, history, geography & civics, and technology in French.

FS students have the option to learn Latin starting in 5ème. From 5ème, FS students add a fourth modern language to their studies: Spanish or German.



3ème and 2nde: IGCSE

In 3ème, French students prepare for the "diplôme du Brevet National" exams. In preparation for the exams, the number of classes taught in French increases. Students continue to study Chinese and English in Combined Courses with British and German Section students.

From 3ème, all TES students follow the British National Curriculum in their English Combined Courses in preparation for the International General Certificate of Secondary Education (IGCSE) exams. All TES students sit the English IGCSE exams together in the last term of Seconde.

1ère and Terminale: Language modules in the International Baccalaureate

Following the IGCSE exams, TES French Section and High School students prepare for the International Baccalaureate (IB) during their Combined Courses in English and Chinese. They sit the IB English and Chinese exams during the last term of Terminale (Tle).

French Section students graduate from TES with a French Baccalauréat diploma plus an IB in languages.

French Section Graduates

French Section graduates have the choice of the very best universities in Europe and North America.





Le Lycée français de Taipei

Le Lycée français de Taipei (LFT) accueille près de 350 élèves de la petite section (3 ans) à la terminale (18 ans). Le LFT propose un enseignement conforme aux programmes du Ministère français de l'Éducation Nationale et propose une offre pédagogique multilingue unique dans l'environnement international de la Taipei European School.

L'école est accueillante et internationale. Elle offre un programme innovant et ambitieux. Le dispositif bilingue français-anglais, auquel s'ajoute l'enseignement de la culture et de la civilisation chinoise, ainsi qu'une organisation pédagogique qui tient compte des profils et des aspirations de chacun, permettent aux élèves de bénéficier d'une qualité d'enseignement unique où la maîtrise de la langue française est une priorité. Ce parcours plurilingue exigeant et enrichissant valorise l'interculturalité de nos élèves. Par ailleurs, l'expérience éducative va bien au-delà des talents linguistiques de nos élèves : ils excellent également en science et technologie, en sciences humaines et sociales, en mathématiques et dans les matières artistiques et sportives.

Le Lycée propose un taux d'encadrement de sept à neuf enfants par adulte du primaire au secondaire, une équipe d'enseignants qualifiés et expérimentés, et un équipement informatique hors pair. L'équipe éducative est inclusive et bienveillante et propose un enseignement et des activités éducatives diversifiés qui fournissent à tous les élèves les moyens de réussir leurs apprentissages, et de d'achever leurs parcours éducatifs brillamment.

Au cours de leur parcours scolaire au LFT les élèves se verront offrir les meilleures conditions possibles pour acquérir savoirs, savoir-faire et savoir-être pour une orientation universitaire de choix. Au secondaire, le passage des examens nationaux français (DNB et Baccalauréat) mais aussi britanniques (IGCSE) et internationaux (IB) donne à nos élèves la possibilité d'étudier dans les meilleures universités et grandes écoles françaises ou anglo-saxonnes après le baccalauréat.

Nos familles sont étroitement associées à la réussite de leurs enfants. Nous mettons en œuvre une communication qui assure un partenariat fort entre l'école et la maison. Le Lycée Français de Taipei est une école unique, qui saura vous séduire pour qu'elle devienne demain votre école.

Si vous souhaitez que votre enfant maîtrise parfaitement plusieurs langues, explore et développe tous ses talents à son rythme, apprenne à s'exprimer à travers les arts, acquière un esprit critique pour pouvoir articuler sa propre pensée, et si vous souhaitez enfin lui donner les clefs pour entrer dans une grande université, où qu'elle soit dans le monde, alors le Lycée Français de Taipei est sans doute l'école qu'il vous faut.

Le Lycée Français : Primaire

École maternelle

La Maternelle s'étend sur trois années - Petite Section (PS), Moyenne Section (MS) et Grande Section (GS). Pendant leurs années de Maternelle, les enfants apprennent les principes fondamentaux des apprentissages et des compétences qu'ils développeront tout au long de leur scolarité. Les principaux objectifs sont de susciter le plaisir d'apprendre et d'aider chaque enfant à découvrir et à développer sa personnalité. Son principe directeur est que tous les enfants peuvent apprendre et progresser. Le personnel de la Maternelle a confiance dans les capacités de chaque enfant et l'aide à développer sa confiance en sa capacité à s'engager, à penser, à apprendre et à réussir à l'école et au-delà.

École élémentaire

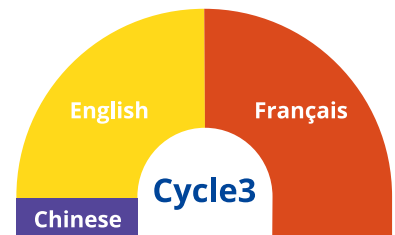
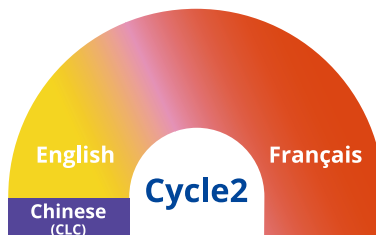
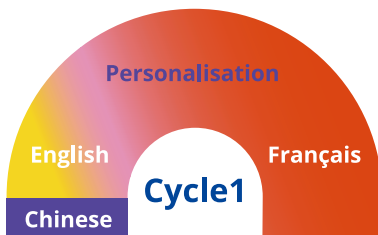
L'école élémentaire comprend cinq niveaux d'enseignement pour les élèves âgés de 6 à 11 ans : CP, CE1, CE2, CM1 et CM2. Le programme de l'école primaire met l'accent sur l'apprentissage des langues, notamment en développant une bonne maîtrise de l'oral. Tout au long de l'école primaire, les enfants apprennent les langues, les mathématiques, l'art, le sport et l'éducation physique, et s'adonnent à des activités qui questionnent le monde qui les entoure. En CM1 et CM2, ils se concentrent davantage sur la littérature, les mathématiques, l'histoire, la géographie, les sciences et l'informatique. Ils apprennent également à penser, à réfléchir et à observer, tout en expérimentant, en imaginant et en développant leurs compétences créatives.

Programme scolaire

Notre section suit le programme pour le primaire du ministère de l'Education Nationale en France. Il est dispensé par nos enseignants dans leur langue maternelle en fonction de l'emploi du temps de la classe et selon notre parcours bilingue.

Notre parcours bilingue français-anglais

Les élèves de la section française sont engagés dans un programme bilingue avec des expériences d'apprentissage en français, anglais et chinois. Ils sont bilingues en français et en anglais à la fin de l'école primaire. En maternelle, nous mettons fortement l'accent sur la langue française, mais avec de nombreuses opportunités pour les enfants d'apprendre et d'interagir en anglais et aussi en chinois. Ensuite, au fur et à mesure qu'ils avancent dans le primaire, l'exposition à l'anglais augmente progressivement, avec certaines parties du programme en mathématiques, sciences, géographie, etc. qui sont enseignées en anglais. En général, les élèves ont deux professeurs (un professeur de français et un professeur d'anglais) qui alternent l'enseignement de la classe sur une base quotidienne ou hebdomadaire.





Programmes de soutien linguistique

Certains de nos élèves ont besoin d'un coup de pouce supplémentaire pour acquérir la langue à un niveau qui leur permettra d'apprendre le programme d'enseignement en classe. La plupart du temps, c'est parce qu'ils sont nouvellement arrivés dans notre école. Les programmes de français langue supplémentaire (FAL) et d'anglais langue supplémentaire (EAL) fournissent aux élèves un soutien intensif en petits groupes pendant une à deux heures par jour. Les enseignants FAL et EAL soutiennent les élèves jusqu'à ce qu'ils deviennent à l'aise avec la langue, d'abord pour communiquer avec les autres, et ensuite pour leur permettre d'accéder au programme d'enseignement et d'apprendre. Les élèves participent aux programmes FAL ou EAL généralement pendant 1 ou 2 semestres, mais cela peut être prolongé si nécessaire. Les enseignants EAL et FAL travaillent en étroite collaboration avec les enseignants des classes de français et d'anglais pour planifier les leçons et évaluer les progrès linguistiques des élèves suivis.

Cours de langue et de culture chinoises (CLC)

L'enseignement du mandarin est dispensé conformément au programme de TES pour le CLC. L'enseignement et les groupes sont différenciés en fonction du profil linguistique des élèves, qui ont la possibilité de changer de niveau et de groupe au cours de l'année en fonction de leurs progrès. Les élèves des sections française, britannique et allemande apprennent le chinois ensemble dans des groupes de niveau à partir de la GS. Les trois groupes sont le chinois langue étrangère (CFL), la langue chinoise (CL) et la langue et littérature chinoises (CLL).

En Maternelle, dans la section française en PS et MS, un professeur de chinois à plein temps offre aux élèves la possibilité d'apprendre et d'interagir en chinois. Ceci est particulièrement important pour les élèves dont le chinois est la première langue, car cela les aide à maintenir leur niveau dans cette langue et leur procure une sécurité sociale et affective essentielle. C'est également une excellente opportunité pour les élèves qui ne parlent pas encore le chinois, car ils ont la possibilité de s'intéresser à cette langue et sont souvent très désireux de l'apprendre !

Le Lycée Français : Secondaire

Le collège

Le collège accueille les élèves dans la continuité de l'école élémentaire. Pendant toute son année de 6ème, l'élève va renforcer et compléter les acquis fondamentaux de l'école élémentaire. En parallèle, il va découvrir de nouvelles matières ainsi que de nouvelles méthodes d'enseignement et de travail.

Les élèves du secondaire étudient le français, l'anglais, le chinois, les mathématiques, une troisième langue vivante étrangère (l'allemand ou l'espagnol), l'histoire et la géographie, les sciences de la vie et de la Terre, la technologie, les arts plastiques et la musique. Ils ont aussi des cours d'éducation civique et de sport. L'option latin est également proposée.

L'éducation physique et sportive, l'éducation musicale, les arts plastiques, ainsi que l'anglais langue vivante 1 et le chinois sont enseignés par des enseignants anglophones, dans le cadre des cours communs aux Sections française, allemande et britannique.

La formation dispensée repose sur un ensemble de disciplines qui, toutes, concourent à l'acquisition des connaissances et des compétences liées au socle commun. Elle est sanctionnée à la fin de la scolarité au collège par le diplôme national du brevet. Les élèves du Lycée français de Taipei obtiennent d'excellents résultats à cet examen national (100% de réussite, 100% de mention très bien ou bien en 2020).



Le lycée

La classe de seconde a pour but de permettre aux élèves et à leurs enseignants d'évaluer quelles spécialités leur conviendront le mieux. Cette décision se fait en fonction du projet d'orientation de l'élève, de ses goûts et de ses résultats académiques.

A l'issue de la classe de seconde, les élèves entrent dans le cycle terminal. Celui-ci s'effectue sur deux années scolaires : la première et la terminale. Le Lycée français propose les spécialités suivantes : mathématiques, physique-chimie, SVT, Humanités-Littérature et philosophie, histoire-géographie et science politique.

Les élèves du Lycée français de Taipei obtiennent d'excellents résultats au Baccalauréat aussi (100% de réussite et 100% de mentions en 2020).

Les langues au secondaire

De la 6ème à la 4ème

Le programme français-anglais du primaire prépare les élèves du Lycée français aux "cours intégrés" qu'ils suivront au secondaire.

De la 6ème à la 4ème, les élèves de toutes les sections de la TES étudient en effet l'anglais, le chinois, les arts, la musique et le sport ensemble, dans le cadre de ce qui est appelé "cours intégrés". C'est l'anglais qui est la langue d'enseignement pour ces cours intégrés (à l'exception des cours de langue et culture chinoises).

Au collège, la littérature française, les mathématiques, la physique-chimie, les sciences de la vie et de la Terre, l'histoire, la géographie, l'enseignement moral et civique et la technologie sont enseignés en français.

Les élèves du Lycée français de Taipei peuvent choisir une troisième langue à partir de la 5ème : espagnol ou allemand et prendre également l'option latin.



En 3ème et en 2nde : l'IGCSE

En 3ème, les élèves préparant le diplôme national du brevet, le nombre de matières enseignées en français augmente. Ils continuent néanmoins d'étudier le chinois et l'anglais en cours intégrés, aux côtés de leurs camarades des Sections britannique et allemande.

A partir de la 3ème, tous les élèves de la TES suivent le British National Curriculum dans le cadre des cours intégrés d'anglais, afin de préparer l'International General Certificate of Secondary Education (IGCSE). Les élèves de 2nde passent les examens de l'IGCSE au cours du troisième trimestre.

1ère et Terminale : les modules de langues du Baccalauréat international

Après les examens de l'IGCSE, les élèves du Lycée français et de la Section High School préparent ensemble les épreuves d'anglais et de chinois du Baccalauréat international (IB), toujours dans le cadre de cours intégrés pour ces deux matières. Ils présentent les épreuves d'anglais et de chinois de l'IB durant le dernier trimestre de la terminale.

La fin de la scolarité au Lycée français est sanctionnée par le diplôme du Baccalauréat français et des modules de langues de l'IB.

Post bac

Les élèves du Lycée français sont admis dans les meilleures universités en Europe comme en Amérique du Nord.



BRITISH PRIMARY SECTION

The British Primary Section (BPS) provides a happy, safe, supportive and caring environment, supporting children's learning as they grow. We are committed to academic excellence and also to the development of the whole child. This means that we will provide opportunities for our children to grow into responsible, emotionally intelligent and confident young people.

Our Section follows the framework of the National Curriculum for England and Wales, but as an International school we draw on the very best educational practice from around the world.

The British Primary Section includes the Foundation Stage, Key Stage One and Key Stage Two. At the end of Key Stage Two children transfer to the British Secondary and High School.

Foundation Stage	Nursery (3-4 years)	Reception (4-5 years)		
Key Stage One	Year One (5-6 years)	Year Two (6-7 years)		
Key Stage Two	Year Three (7-8 years)	Year Four (8- 9 years)	Year Five (9-10 years)	Year Six (10-11 years)

Philosophy of the British Primary Section

- Every aspect of every child is unique, and therefore we are committed to developing the whole child. We pride ourselves in getting to know each child as an individual – their preferred learning styles, their strengths and areas for development. With this knowledge we aim to provide a learning environment and plan a curriculum that will enable each child to be the very best they can be.
- For children to learn effectively, the curriculum must be relevant, the learning fun, and the environment stimulating. This includes our provision of co-curricular activities and school trips.
- In order to plan effectively to meet each child's needs, there must be purposeful and positive assessment that directly informs planning and teaching. Assessment is a combination of formal and informal assessment and we are committed to involving children in their own assessment.
- Parents are key educators of their children and therefore we are committed to working in partnership with the parents to meet the needs of the children. We welcome open and honest dialogue based on mutual respect.

Children's Learning Approaches

Children learn and develop in many different ways and our teachers have a crucial role in this learning. They draw on a range of teaching strategies and knowledge of child development. Children deepen their understanding by playing, listening and speaking, observing, planning, questioning, experimenting, testing, repeating, reflecting, and responding to adults, to each other, to the environment and to the task at hand.

The Foundation Stage

The Foundation Stage covers Nursery and Reception (ages 3 - 5). The curriculum is divided into seven areas of learning -

- Personal, Social and Emotional Development (PSED)
- Physical Development (PD)
- Communication and Language (C&L)
- Literacy (Reading and Writing)
- Mathematics
- Understanding the World
- Expressive Arts and Design

As each child is unique, we meet needs on an individual basis using the Characteristics of an Effective Learner to ensure that the different ways and different rates in which a child learns are fully provided for. Structured play is a key element in this and through a child's interests we plan for high-attainment and global learning.

Inherent in all our provision is the development of core skills and concepts: all children attain a secure foundation in PSED, PD and C&L (see above).

Towards the end of Reception year we begin a transition process that enables children to seamlessly and happily progress into our Key Stage 1 classes and curriculum.

Key Stage One and Key Stage Two

Key Stage One covers Year 1 and Year 2 (ages 5-7). The students are experiencing their first two years of the English National Curriculum.

Key Stage Two covers Years 3, 4, 5 and 6 (ages 7-11). The students continue their journey with the English National Curriculum, accessing the same subjects as the children in Key Stage One.

In all Key Stages our focus is on student learning and the development of the whole child.

Curriculum

Our broad and balanced curriculum consists of the three core subjects and eight foundation subjects. The core subjects are:

- English
- Mathematics
- Science

The foundation subjects are: History, Geography, Art, Computing, STEAM, Physical Education, Chinese Language and Culture (CLC) and Music.

In addition, Personal, Social and Health Education and Citizenship are covered on a planned basis in a structured way in the classroom and through assemblies, as well as through less structured involvement in the children's play outside in the playground.

The English National Curriculum provides children's learning with a clear progression in skill development and a framework for learning that ensures that learning is meaningful, challenging and engaging. This approach allows children to make links across the curriculum, apply skills to new experiences and become critical and creative thinkers.

TES Values and the Learner Profile

There are two main sets of Behaviour Guidelines for our students. These are the TES Values that are applied across all four Sections that make up TES, together with the BPS Learner Profile. The BPS Learner Profile underpins our approach to learning and pupil development and puts the student at the centre of everything we do. The BPS Learner Profile feeds into the IB Learner Profile of the British Secondary and High School and both seek to prepare our young people to become positive and successful lifelong learners.



Chinese Enrichment Pathway

The Chinese Enrichment Pathway (CEP) is pathway that follows the Enhanced National Curriculum (ENC) taught across the British Primary Section, but uses both English and Chinese as the languages of instruction for the teaching of content of the (ENC).

Main purpose of Chinese Enrichment Programme

- Maintaining child's Chinese whilst developing English
- Allow children to flourish with their language learning
- Developing Chinese literacy (中文素養), initially through oracy and comprehension (Writing should develop from speaking)
- Accessing curriculum in both languages successfully.
- Enhancing students' logical thinking level

Specialist Teachers

Specialist teachers include Music, Chinese Language and Culture (CLC), Physical Education (PE) and Art.

Additional Support

The British Section has an excellent Learning Support department that supports children who require additional help with their learning. We also have a dedicated team of English as an Additional Language teachers who work with children needing English language support.

TES VALUES

	Age 3-5	Age 6-8	Age 9-11
Respect 尊重	We care	We take care of our world and the people in it	We are honest, considerate and tolerant global citizens
Participation 參與	We join in	We join in and are active learners who share our thinking	We take an active role in our learning and encourage others to do the same
Responsibility 負責	We think	We think about our actions and we make good choices	We are trustworthy, independent and act as positive role models
Creativity 創意	We create	We are creative and solve problems in different ways	We use our imagination, explore ideas and express ourselves freely
Perseverance 全力以赴	We try	We keep trying and do our best	We show persistence and strive to do our best

Co-curricular Activities

Year 2- Year 6 can further develop a range of skills by taking part in a broad range of co-curricular activities. These are run by TES Educational Services and include sports, music, arts, languages, cookery, dance, computing and many more.

Pupils are also invited to participate in peripatetic music lessons that allow them to learn flute, piano, clarinet, cello, guitar, harp, drums, violin and voice training. Details of the various activities and how to apply are provided to all new families joining TES.

Teaching Team

The British Primary Section benefits from having a strong team of creative, dedicated and highly professional class teachers and learning assistants who create a well organised and resourced learning environment, both indoors and outdoors.

Positive Partnership Communication with Parents

Throughout the school year, there are many opportunities for communication between home and school, for example:

- Use of Home-link diaries
- Curriculum presentations
- Written reports and information on student progress
- Parent - Teacher meetings
- Seesaw - an online portfolio and communication tool
- Newsletters
- Open Door Policy
- A very proactive Parent-Teacher Association

The partnership between parents and school is a critical element in our children's learning.



THE BRITISH SECONDARY AND HIGH SCHOOL SECTION

At the Swire European Secondary Campus, the students in the British Secondary and High School Section are part of a multicultural environment, with students from all three Sections (British, French and German). Throughout the year, there are many cross-section events which promote and encourage students to work together, to share their talents with each other, and to learn from each other. For example, Sports Day, Europe Day, Languages Week, music and drama performances, and other special events throughout the year.

Learning in the British Secondary and High School

Learning takes place within creative and safe classrooms that promote collaboration, risk-taking and reflective practice. Lessons are planned to enable all students to make progress. This is informed by the available data, pastoral profiles and strong interpersonal relationships with professional and caring teachers and support staff.

In all aspects of their school life, students are given the tools and opportunities to utilise technology effectively to enhance their knowledge, broaden their perspectives and communicate their ideas. Learners are empowered with the digital tools and skills required to achieve excellent academic results, while attaining the necessary 21st century skills for success in the modern world.

Our 1:1 device programme ensures our students are provided with dynamic learning opportunities to cultivate skills that will empower them to be responsible and productive global citizens. By enabling seamless personalised access, we believe that students can be encouraged to pursue their natural curiosity, thereby developing enquiry skills, enhancing their critical thinking and developing a love for lifelong learning.

Key Stage 3

Students in Years 7, 8 and 9 (ages 11 to 14) broadly follow the English Key Stage 3 National Curriculum; however, the schemes of learning reflect our international profile and local Taiwanese context. As a school, we never stand still, and it is standard practice for departments to continually review, refresh, and update their schemes of learning. Our aim is to ensure that what is taught at Key Stage 3 continues to be both rigorous and challenging, ensuring that students are well-prepared to make the transition into the High School.

Key Stage 3 Subjects: English, Mathematics, Science, CLC (Chinese Language and Culture) Computing, ISE (Individuals, Societies and Environmental Studies), Modern Foreign Languages (French, German or Spanish), PE, Art, Music Drama, Core (our equivalent to PSHE) and DELTA (a STEAM programme).



IGCSE (High School)

The two-year IGCSE programme, which commences in H1 and goes through to the end of H2 (the first two years of high school) is the beginning of a four-year journey that will give students access to enriching learning opportunities and prepare them for entry to some of the world's best universities. The different IGCSE subjects provide not only internationally-recognised qualifications, but they are also great preparation for the IB Diploma Programme.

Students studying for the IGCSE examinations complete the courses in two years. Some subjects are prescribed, whereas others are chosen. The breadth of study is a key element which helps the students to make more informed choices about their IB subject options.

These international qualifications are recognised by the world's best universities and employers, giving students a wide range of options in their education and future careers. The different subject courses prepare students for life, helping them to develop informed curiosity and a lasting passion for learning.

IB Diploma Programme (High School)

Since August 2002, TES has been an authorised International Baccalaureate (IB) World School.

The International Baccalaureate (IB) Diploma is a two-year course (H3 and H4) that leads to a qualification widely recognised by universities around the world. The IB Diploma programme emphasises high academic standards in mandatory areas of literature, a second language, mathematics, humanities and science. Academic excellence is coupled with an emphasis on personal development in areas such as research, philosophy, and social awareness. Its rigorous standards and in-depth study of subjects require commitment, organisation and initiative.



Grading Standards

Academic reports are criteria-based defined by attainment descriptors for each subject/course rather than by statistical percentages. The grading system is aligned with the standards of our awarding bodies (examination boards). We do not rank students. Our academic transcripts provide international grading information that supports student transition at any age level.

Academic Achievement and Wellbeing

In the British Secondary and High School, we are committed not only to caring for the wellbeing of our students and teachers, but also to actively educating our community about how to live a happy and fulfilled life.

We encourage the development of the whole person, promoting the long-term development and success of the children and young people in our care. We care equally about achieving world class academic outcomes as we do about individual student wellbeing, and teachers are expected to provide rigorous learning experiences.

We believe that all of us are responsible for developing the potential of each member of our school community. As an essential part of this, every member of our community is expected to respect and celebrate our multicultural environment and the enrichment this brings. We are a school community that seeks to develop each student as a unique individual and to be independent, principled and mindful members of the global community.



Co-Curricular Activities (CCAs)

We take pride in the academic achievements of our students, but we also recognise the importance of our co-curricular activities programme (CCAs) and opportunities for student leadership. These opportunities enhance the education of the whole child. They allow students to gain new experiences, offer them new ways to express themselves and allow them to interact with students and staff outside the usual context of the classroom.

Students can choose new activities each term from a wide range of sporting, musical and teacher- and student-run club activities (nearly 100 in total throughout the year). We have activities that run during lunchtimes and others that run after-school. Most of the sports offer our students a chance to compete in tournaments at the end of their respective seasons, and our many music ensembles give students a chance to perform at various events during the school year. Our activities are well-established and hugely popular with the students (Annual School Musical Production, Model United Nations, Debating, Duke of Edinburgh International Award, Chinese Drumming, and Robotics to name but some).

University and Careers Counselling

The University and Careers Counsellors (UCC) guide students throughout their four years of High School on making informed decisions regarding their course selections, standardised testing, career options, and university applications. A UCC curriculum is in place starting in H1 (Year 10) with various lessons during Core (our equivalent to PSHE) and finishing off in H4 (Year 13) with fortnightly lessons and regular individual meetings. Students officially start to meet with their assigned UCC in January of their H3 year. A parent meeting is required in April to May to establish a university application plan for each student.

In addition to one-on-one meetings and UCC lessons, the university counsellors also host parent presentations throughout the academic year catered to parents of H1 to H4 students, and Parent Coffee Meetings for all Secondary and High School parents. H3 year is the most crucial time for students as this is the time when students need to research different universities and application systems, develop a reasonable university list, and take all necessary exams for university admission. H4 year is when students complete their applications and finish the process by earning the IB grades needed for admission.

At TES, all students are set up with a MaiaLearning account as they enter High School. MaiaLearning is a comprehensive, data-driven online resource that can be used to research and explore course options, research universities, write college essays, and manage university applications. Students can search for universities and areas of study, and start to create a list of institutions they would like to explore in more depth.





STUDENT SERVICES

Educational Services

The Department of Educational Services provides the daily student services that compliment the daily classroom education delivered in each Section of the school. These services include: transportation services, cafeteria services, administration of the co-curricular activities (CCA) provision, nursing services, uniform shop, summer programs and additional (peripatetic) music and language lessons.

Transport Services

The school buses service students from across Taipei City and New Taipei City, delivering them to and from the two campuses (Primary Campus and Secondary Campus) each day. This school bus service is outsourced but supervised by TES' Transport Team.

Bus routes and meeting points for the new academic year are set up according to registration data. Bus places are offered to and accepted by parents and passengers in accordance with our Bus Charter (viewable on the TES website). Payment for the service is made by semester and done via the TES Activity Ordering System (AOS), which is an online payment service for all non-compulsory services.

Bus route maps can be found on the TES website, but represent only present routes.

Cafeteria Services

Our cafeterias provide healthy and nutritious school lunch daily, which consist of a main dish plus two side dishes; in addition there are always fresh fruits on the side available. And we may provide seasonal drink. The menus are designed by experienced international chef and supported by a nutritionist consultant. The preparation of the food is provided by a professional external catering company, delivered daily to our cafeteria for the final serving.

Lunch at TES is more than just a dining experience. The menu content is linked with our learning so students learn about the foods and how the right eating link to their physical health. Our lunch menu is posted on the website in advance for parents to submit their children's monthly meal order.

An online system is used for both ordering and paying, to ensure convenience to parents and efficiency in the cafeteria where our cafeteria staff ensure cleanliness and hygiene in the serving and eating areas.

Students, who prefer not to use our cafeteria service, including those with special dietary needs, can bring their own packed lunches and eat them in the cafeteria with their classmates.



Nursing and Medical Services

At TES, we follow a 'good practice' guide, as well as the school's established policy on accidents and staff sickness. For instance, we always have a nurse on duty when there is a sports event on school premises.

Nursing facilities and equipment are readily available at both the Primary and Secondary campuses, with qualified nurses always on duty. Our nurses are trained specifically to provide first aid for school-related injuries and, whilst they may have the knowledge to deal with other ailments, we do not expect them to do so without prior consultation with the parents or guardians, except of course in an emergency.

Our nurses also take a holistic approach to health and wellbeing in that they actively participate in lessons to talk about matters of hygiene, how to help prevent the spread of infections, and any other health-related issues that may crop up during the lives of the children in our school.



Uniform Shop

The uniform shop supplies all uniform items required in the British Primary Section, where the wearing of school uniform is compulsory. It is also compulsory for all students across all sections to wear the school sports kit during PE lessons and when representing the school in sporting events.

The TES uniform shop is located at the Primary campus and the opening hours are 12:30 pm - 3:30 pm when school is in session. The shop is also open during the week before the start of the new academic year, so that parents are able to buy any items needed for the coming year. We carry sizes to cover every student, from Infant through to High School.

Co-curricular Activities (CCAs)

The provision of co-curricular classes is a key aspect of TES' approach to whole student learning. There is a vast array of activities which students can participate in the areas of sports, music, arts, technology, hobby and languages. Every year the offering may alter slightly subject to the faculty's resource and availability. Parents are notified via email to register online at the beginning of each term.





TES Summer School

During the summer holidays, TES offers a two week programme of learning activities for all year groups across the Primary and Secondary school.

With an active programme of sports, arts and crafts, cookery, language skills, work and class projects, it is a fun way to prepare new students for their life at the school. It is also a great way for new and existing students to make friends whilst learning in a more relaxed and fun environment.

Secondary students also get a jump start on the coming year with preparatory work for IGSCE.

Peripatetic Music

With a strong demand for peripatetic music lessons within TES, lessons take place at lunchtimes and after school. Specialist music teachers come to school to provide these lessons. Instruments taught include violin, flute, trumpet, cello, trombone, guitar, saxophone, clarinet, harp, French horn, drums and piano.

Rental of instruments is also available.



ADMISSIONS

Taipei European School is a not-for-profit international school aiming to provide excellent accredited education for the local international community in Taipei. Unlike other international schools, TES operates three language Sections. Our British Section, French Section and German Section offer respective European national curricula for students aged 3 to 18. Our High School Section allows students to undertake the International General Certificate of Secondary Education (IGCSE) or French and German co-qualifications in the first two years; and the final two years of High School culminate in the International Baccalaureate (IB) Diploma or the French Baccalaureate.

How to Apply

To apply, please fill out an online application form via OpenApply. We have one admissions intake per academic year and the application cycle for the new school year opens on 1 September. A completed application must be submitted by the end of February*. For mid school-year transfer from overseas

**Please visit our website for detailed information.*

please contact the Admissions Office directly at admissions@tes.tp.edu.tw for further information. Mid school-year applications will be processed subject to availability.

An applicant should apply to one Section only per admissions cycle. Please choose a Section before submitting your application.

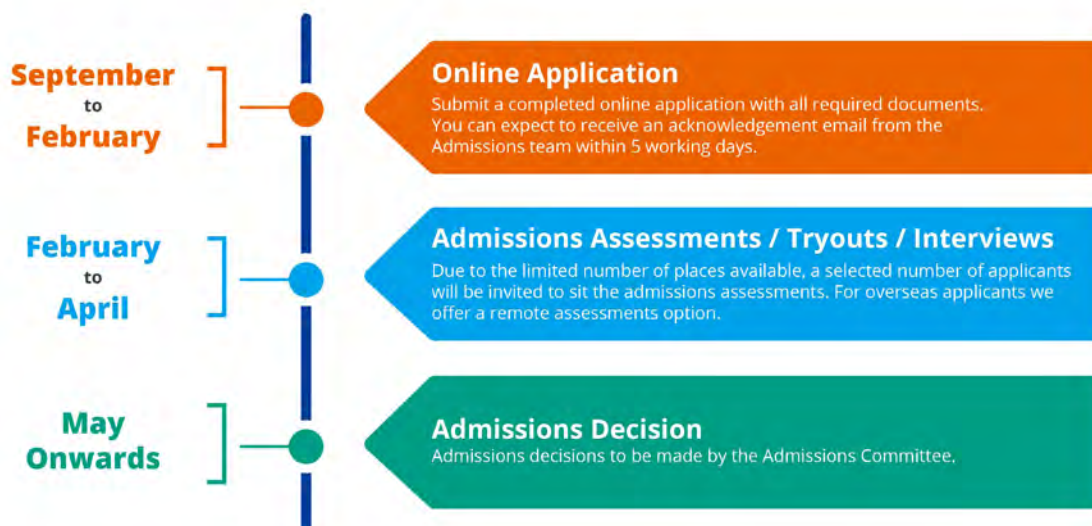
Additional Information

Information about the curricula of the different Sections can be found on the school website. Please also refer to the Admissions pages for details. We understand that choosing a school for your child is one of the most important decisions that you will make, therefore, if there is anything else you would like to know, please do not hesitate to contact the Admissions Office at admissions@tes.tp.edu.tw or by telephoning: +886-2-8145-9007 ext .51 for further information.

Apply Here

Submit your OpenApply application via <https://tes.openapply.com>

Admissions Timeline





Taipei European School

Vision, Mission and Core Values

Vision

To be a flourishing, multilingual and multicultural community of lifelong learners that embraces independence, curiosity and empathy to make a positive difference in local, national and global environments.

Mission

Through world class curricula, Taipei European School cultivates lifelong learners and responsible global citizens who are ready to rise to the challenges of the future. We nurture independence, embrace diversity, and encourage all to "do well by doing good". We embrace holistic education programmes that value academic accomplishment while prioritising the social and emotional wellbeing of each learner.

TES Core Values

The school expects that we

- Strive for excellence in all that we do
- Encourage the development of the whole person
- Sustain a strong ethos that emphasizes students' welfare and their personal, social and emotional development
- Encourage students to pursue their natural curiosity thereby developing enquiring and challenging minds and enhancing their critical thinking and preparation for life-long learning
- Promote good citizenship through a concern and compassion for social, global and environmental issues
- Respect and celebrate the multicultural environment of our school which enriches our community and our learning
- Develop the potential of each member of our school community
- Maintain a strong partnership between our school, parents and the community

Graduate Attributes

We strive for each graduate to be

- A Lifelong Learner
- A Critical Thinker
- Independent
- Empathetic
- Socially Responsible
- Interculturally Aware
- Globally Minded

Community Values

We expect each member of our community to exhibit

- Respect
- Participation
- Responsibility
- Creativity
- Perseverance



Europäische Schule Taipei

Vision, Auftrag und Grundwerte

Vision

Wir wollen eine blühende, mehrsprachige und multikulturelle Gemeinschaft lebenslang Lernender sein, die mit Eigenständigkeit, Neugier und Mitgefühl ihre lokale, nationale und globale Lebenswelt zum Guten verändert.

Auftrag

Durch Bildungsgänge von Weltklasse bringt die Taipei European School lebenslang lernende und verantwortungsbewusste Weltbürger*innen hervor, die bereit sind, sich den Herausforderungen der Zukunft zu stellen. Wir fördern Eigenständigkeit, begrüßen Vielfalt und ermutigen alle, sich gut zu tun, indem sie Gutes tun. Wir bekennen uns zu ganzheitlichen Bildungsprogrammen, die akademische Leistungen wertschätzen und gleichzeitig das soziale und emotionale Wohlergehen aller Lernenden in den Vordergrund stellen.

TES Grundwerte

Die Schule erwartet von uns, dass wir

- in all unserem Tun nach höchster Qualität streben
- die Entwicklung der ganzen Person fördern
- ein starkes Ethos bewahren, das die Lernenden und ihre persönliche, soziale und emotionale Entwicklung in den Vordergrund stellt
- die Lernenden ermutigen, ihrer natürlichen Neugier zu folgen und so einen forschenden und infrage stellenden Geist sowie kritisches Denken zu entwickeln und sich auf lebenslanges Lernen vorzubereiten
- gesellschaftliche Verantwortung durch Engagement für soziale, globale und ökologische Fragen fördern
- das multikulturelle Umfeld unserer Schule, das unsere Gemeinschaft und unser Lernen bereichert, achten und feiern
- das Potenzial eines jeden Mitglieds unserer Schulgemeinschaft entwickeln
- eine starke Partnerschaft zwischen unserer Schule, den Eltern und dem schulischen Umfeld aufrechterhalten

Unsere Absolventinnen und Absolventen

Wir streben an, dass unsere Absolventinnen und Absolventen

- lebenslang lernen
- kritisch denken
- eigenständig sind
- mitfühlend sind
- soziale Verantwortung übernehmen
- ein interkulturelles Bewusstsein entwickeln
- global denken

Werte unserer Gemeinschaft

Wir erwarten von jedem Mitglied unserer Gemeinschaft

- Respekt
- Teilnahme
- Verantwortung
- Kreativität
- Durchhaltevermögen



Ecole européenne de Taipei

Vision, Mission et valeurs fondamentales

Vision

Être une communauté plurilingue, multiculturelle et florissante, qui stimule l'apprentissage tout au long de la vie, promeut l'indépendance, la curiosité et l'empathie, et contribue à faire une différence dans les enjeux locaux, nationaux et mondiaux.

Mission

Grâce à des programmes de renommée internationale, la "Taipei European school" forme des citoyens du monde engagés dans l'apprentissage tout au long de la vie et prêts à relever les défis du futur. Nous cultivons l'autonomie, chérissons la diversité et soutenons chacun et chacune à s'épanouir en faisant preuve d'empathie. Nous privilégions des programmes éducatifs holistiques qui valorisent la réussite académique tout en favorisant le bien-être social et émotionnel des élèves.

Les valeurs fondamentales de la TES

L'école attend de nous

- que nous poursuivions l'excellence dans tout ce que nous entreprenons
- que nous encourageons le développement de la personne dans son ensemble
- que nous maintenions une éthique forte qui met l'accent sur le bien-être des élèves et leur développement personnel, social et émotionnel
- que nous encourageons les élèves à écouter leur curiosité naturelle, développant ainsi des esprits curieux et audacieux, en renforçant leur esprit critique, et leur préparation à l'apprentissage tout au long de la vie
- que nous promouvions la sensibilisation et l'intérêt pour les enjeux mondiaux, sociaux et environnementaux
- que nous respectons et célébrions l'environnement multiculturel de notre école qui enrichit nos apprentissages et notre communauté
- que nous développons le potentiel de chacun et de chacune des membres de notre communauté
- que nous maintenions un lien fort entre école, les familles et la communauté

Nos diplômés

Notre ambition est qu'à la fin de leur scolarité, nos jeunes diplômés soient

- engagés dans l'apprentissage tout au long de leur vie
- capables d'esprit critique
- indépendants
- capables d'empathie
- socialement responsables
- ouverts aux autres cultures
- citoyens du monde

Nos valeurs

Nous attendons de chaque membre de notre communauté qu'il fasse preuve

- de respect
- d'engagement
- de responsabilité
- de créativité
- de persévérance



台北歐洲學校

願景、使命與核心價值

願景

提供一個培育積極正向發展、多種語言和多方文化終身學習者的教育環境，培養學生具備獨立自主性、好奇心和同理心，並能於其所在城市、國家及全球環境中發揮積極正面的影響力。

使命

透過世界一流的課程，台北歐洲學校致力於培育能夠迎接未來挑戰的終身學習者及負責任的全球公民。我們培養獨立性，擁護多樣性，並鼓勵所有人「為善者成」。我們關注學業成就，也重視學生的身心發展。

台北歐洲學校核心價值

學校期待所有成員能

- 凡事全力以赴
- 提倡五育均衡發展的全人教育
- 重視學生身心靈均衡發展
- 鼓勵學生透過培養求知慾及明辨思維的能力，進而提升探本溯源之好奇心，為終身學習作準備
- 藉由對社會、全球及環境相關之議題，培育具備同理心的世界公民
- 尊重並提倡我們學校的多元文化及學習環境
- 發展學校社群中每個成員的潛能
- 維持學校、家長與社群間之緊密關係

畢業生特質

我們致力使每位畢業生都能具備以下特質

- 終生學習者
- 慎思明辨
- 獨立自主
- 同理心
- 社會責任
- 跨文化意識
- 國際觀

社群價值觀

我們期許學校所有成員能展現以下特質

- 尊重
- 參與
- 責任
- 創造力
- 韌性

Learn and Flourish

Feeling
Good

Positive (+)
Health
Emotions
Relationships
Mindset

Doing
Well

Swire European Primary Campus

🏠 99 FuGuo Road, ShiLin District

Taipei 11158, Taiwan ROC

☎ Tel: +886-2-8145-9007

Fax: +886-2-2832-5058

Swire European Secondary Campus

🏠 31 JianYe Road, ShiLin District

Taipei 11193, Taiwan ROC

☎ Tel: +886-2-8145-9007

Fax: +886-2-2862-1458

🌐 <https://www.tes.tp.edu.tw/>

